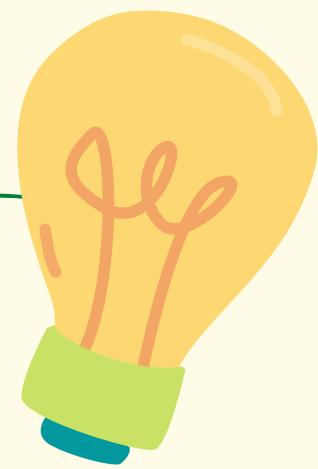


New Island accommodation environmental measures

We are committed to pro-active environmental measures

1



Solar electrical energy

In 2022-23 we are inputting an entirely new solar renewable energy system to New Island Settlement to minimise the need for fossil fuel.

Energy Efficient Measures

2

We actively work to reduce energy usage on New Island by:

- Replacing as required with energy efficient appliances.
- Use of LED light bulbs.
- Use of heating thermostats with recommendation to keep set between 18 - 20°C.
- Commitment to improving insulation in accommodation.
- All windows & doors are double glazed, except for 2 that have thermal film to improve thermal efficiency.
- Information to help guests reduce their energy use.

3

Water Management

We are proactive in reducing water usage combined with forward planning of water system to ensure New Island's water use remains within capacity through:

- Commitment to increasing use of rain water collection for irrigation & other water needs.
- Dual toilet flush systems.
- Maintenance schedule to monitor & repair leaks.
- Information to help guests reduce their water use.
- 2022 additional water tank installed using 2nd spring.

4

Buy local where ever possible

We buy local goods where ever possible to reduce our carbon footprint & support local businesses.



Recycle, reduce & reuse ethos

- Since 2021 all glass & cans have been recycled to Stanley.
- Committed to reducing plastic & chemical use:
 - Toilet paper, kitchen roll & tissues all zero plastic products & made from 100% recycled paper.
 - Eco friendly cleaning products where possible.
 - Re-usable soap, sanitiser & cleaning bottles.
- Use FSC certified stationery & reuse paper for notetaking.
- Actively seek products that use less plastic, are made of recyclable materials & can be re-used.
- Provide environmentally friendly cling film & tupperware style products for storage of food.

6

Health & Safety

We follow enhanced hygiene protocols against COVID-19 & are credited by the World Travel & Tourism Council as a Safe Travels destination.

Biosecurity & Restoration

7

We follow strong biosecurity protocols & are committed to restoration of New Island. Please ask for more information of how you can volunteer & help with restoration activities.

